

# VIKING RUBBER

HIGH QUALITY RAINWEAR



HIGH QUALITY  
RAINWEAR









# INDEX

VIKING RUBBER CO. | 7

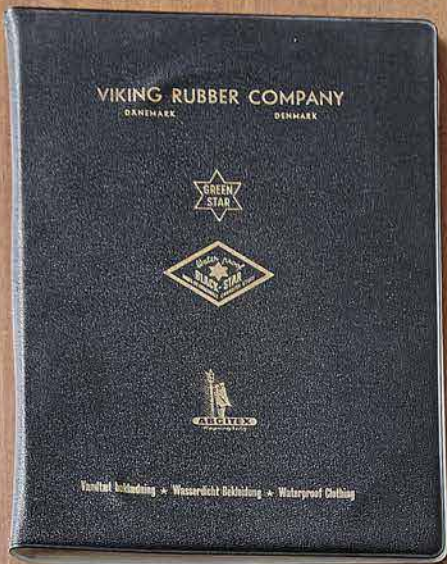
CUSTOMIZED SOLUTIONS | 8

RAINWEAR | 11

SIZE CHART | 23

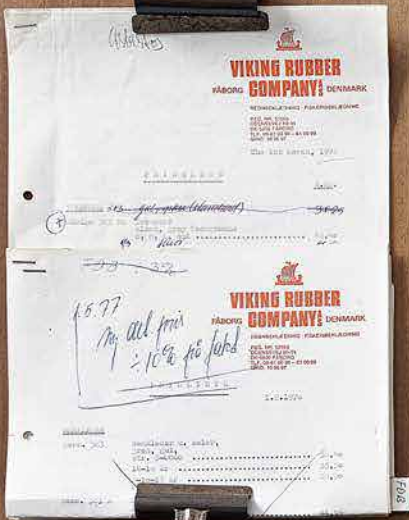
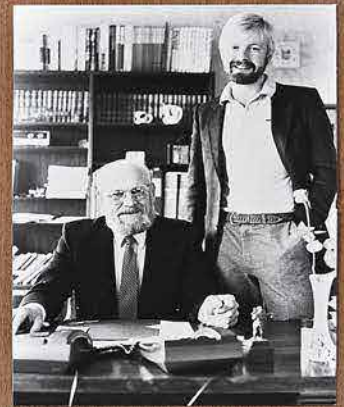
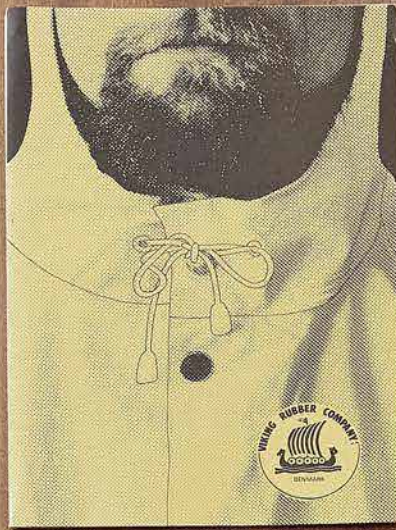






10

11



12

14

13





# QUALITY IS OUR TRADITION

Viking Rubber Co. is a family-owned Danish company with the 3rd generation at the helm. Since its establishment in 1935, we have had one singular mission: to provide high-quality rain and workwear.

We have worked with a steadfast determination to reach our goal, and we always develop our rain and workwear with the end-user in mind. And we are very proud to be able to create rain and workwear that solves actual challenges for the wearer.

Because our main concern is always our customer, and we take pride in providing them with high-quality products and reliable service come hell or high water.

We wish to help our customer steer towards new horizons and help them take their rain or work wear to new heights.

# HISTORY

## 1935

Viking Rubber Company A/S is founded by the Rasmussen brothers near Asnaes on Zealand. The family-owned company started out by producing heavy-duty rainwear for industry and agriculture as well as for commercial fishermen.

## 1976

The Company is sold to Svend Aage Andersen and Kurt M. Andersen.

## 1991

First step on the way to outsourcing Viking's production facilities to Eastern Europe.

## 2006

New production plant of 2,000 sqm is opened in Ho Chi Minh City, Vietnam.

## 2008

The production facilities in Ho Chi Minh City, Vietnam are expanded from 2,000 to 6,000 sqm.

## 2013

Viking Vietnam Ltd. becomes SA 8000 certified.

## 2016

Viking Vietnam Ltd. becomes ISO 14001 certified.

## 2017

Alexander Mygind Andersen joins the company management as third generation of the Andersen family.

## 2019

Alexander Mygind Andersen took responsibility of the company.

## 2021

Alexander now owns the majority of the shares.  
2nd. generation, Kurt M. Andersen, holds the position of Chairman of the Board.





The customer is always our main focus. At Viking Rubber Co., we not only develop rain and workwear tailor-made to specific industries. We also offer our customers the option to customize their own rain and workwear.

With our production facility, we can provide flexible delivery and meet the individual requirements of our customers.

We always begin with a meeting to go through your ideas and needs. Afterwards, we consult you and provide you with different solutions that will meet your requirements. And in the end, our production facilities will manufacture the products for you.

With the customized solution you get an individual and unique company profile, that provide you a higher level of recognition.

# **COSTUMIZED SOLUTIONS**













We welcome you to the roots of Viking Rubber Company. On the following pages you'll see our designs that became the foundation of our company - our rainwear. The clothing is water-and windproof. We produce rainwear for those who want heavy and rigid clothes, but also rainwear for those who want light and soft clothes as well.

All our rainwear is double welded in the critical areas. This method is part of making your Viking Rubber Rainwear an efficient protection against the elements - something you will benefit from whether you are a serious industrial fisherman, angler or carpenter with a need for a simple rain jacket.

# RAINWEAR





## SMOCK STANDARD

Wide hood with draw cord · Button closing storm flap at neck · Windcuffs at sleeves · Strong quality · Double welded in critical areas · Waterproof · Outer fabric: 70% PVC / 30% CO · 640g/m<sup>2</sup>.

**DARK GREEN** 213023-200-R5  
**SIZE** S-3XL



## RAIN JACKET STANDARD

Wide hood with draw cord · Storm cuffs · Double storm flap with hidden buttons · Strong quality · Double welded in critical areas · Waterproof · Outer fabric: 70% PVC / 30% CO, 640g/m<sup>2</sup>.

**DARK GREEN** 212026-200-R5  
**SIZE** S-3XL



## BIB TROUSERS STANDARD

Adjustable braces with Fix-Lock® suspenders · Adjustable waist with buttons · Strong quality · Double welded in critical areas · Waterproof · Outer fabric: 70% PVC / 30% CO, 640g/m<sup>2</sup>.

**DARK GREEN** 223025-200-R5  
**SIZE** S-3XL





## RAIN JACKET POPULAR

Hood with draw cord · Storm cuffs · Button closing double storm flap in front · Double welded · Outer fabric: 91% PVC / 9% PES 340g/m<sup>2</sup>.

**DARK GREEN** 212005-201-R5  
**HV-ORANGE** 212005-201-H3  
**SIZE** S-3XL



## RAIN JACKET BUDGET

Wide hood with draw cord · Storm cuffs · Double storm flap with hidden zipper · Double welded in critical areas · Waterproof · Outer fabric: 80% PVC / 20% PES, 520g/m<sup>2</sup>.

**DARK GREEN** 212006-202-R5  
**HV-ORANGE** 212006-202-H3  
**SIZE** S-3XL



## BIB TROUSERS POPULAR

Adjustable braces · Adjustable waist with buttons · Double welded in critical areas · Waterproof · Outer fabric: 91% PVC / 9% PES 340g/m<sup>2</sup>.

**DARK GREEN** 223005-201-R5  
**HV-ORANGE** 223005-201-H3  
**SIZE** S-3XL



## BIB TROUSERS BUDGET

Adjustable braces with Fix-Lock<sup>®</sup> suspenders · Adjustable waist with buttons · Double welded in critical areas · Waterproof · Outer fabric: 80% PVC / 20% PES, 520g/m<sup>2</sup>.

**DARK GREEN** 223004-202-R5  
**HV-ORANGE** 223004-202-H3  
**SIZE** S-3XL





## RAIN JACKET FLEX

Hood with draw cord · Storm cuffs · Storm flap with velcro and zipper · Front pockets · Welded seams · Waterproof · Outer fabric: 67% PVC / 33% PES, 360g/m<sup>2</sup>.

**DARK GREEN** 212014-203-R5  
**SIZE** XS-3XL



## BIB TROUSERS FLEX

Bib and adjustable elastic braces · Adjustable waist with buttons · Welded seams · Waterproof · Outer fabric: 67% PVC / 33% PES, 360g/m<sup>2</sup>.

**DARK GREEN** 223004-203-R5  
**SIZE** S-3XL



## TROUSERS FLEX

Elasticed waistband · Welded seams · Waterproof · Outer fabric: 67% PVC / 33% PES, 360g/m<sup>2</sup>.

**DARK GREEN** 222000-203-R5  
**SIZE** S-3XL





## SMOCK PRIMEUR

Hood with draw cord · Button closing storm flap at neck · Stormcuffs on the sleeves · Double welded in critical areas · Waterproof · Outer fabric: 70% PVC / 30% CO, 630g/m<sup>2</sup>.

**HV-ORANGE** 213023-209-H3  
**SIZE** S-3XL



## RAIN JACKET PRIMEUR

Wide hood with draw cord · Storm cuffs · Double storm flap with hidden buttons · Strong quality · Double welded in critical areas · Waterproof · Outer fabric: 70% PVC / 30% CO, 630g/m<sup>2</sup>.

**HV-ORANGE** 212026-209-H3  
**SIZE** S-3XL



## BIB TROUSERS PRIMEUR

Bib and braces · Uniform cut front and back makes the bib trousers reversible · Double welded in critical areas · Waterproof · Outer fabric: 70% PVC / 30% CO, 630g/m<sup>2</sup>.

**HV-ORANGE** 223026-209-H3  
**SIZE** S-3XL





## REINFORCED SMOCK

Hood with draw cord · Button closing storm flap at neck · Reflex at shoulders · Reinforcement in front and at sleeves · Double welded in critical areas · Waterproof · Reinforcement: PVC 700g/m<sup>2</sup> · Outer fabric: 70% PVC / 30% CO, 630g/m<sup>2</sup>.

**HV-ORANGE/BLACK** 213011-209-H3Z9  
**SIZE** S-3XL



## REINFORCED BIB TROUSERS

Detachable adjustable braces with Fix-Lock<sup>®</sup> suspenders · Reinforcement in the full length of the leg · Double welded in critical areas · Reinforcement at hem · Reinforcement: PVC 700g/m<sup>2</sup> · Waterproof · Outer fabric: 70% PVC / 30% CO, 640g/m<sup>2</sup>.

**HV-ORANGE** 223011-209-H3Z9  
**SIZE** S-3XL





## BOILER SUIT

This green boiler suit is for the chemical industry where it pays off to be well protected and prepared for handling chemicals. The suit protects you both against liquid chemicals, water penetration, arching and electric shocks.

The suit is mainly used by people who deal with heavy fuel tanks and by refinery technicians.



## BOILER SUIT

Hood with draw cord · For work with chemicals · Storm flap with velcro and zipper · Welded seams · Outer fabric: 72% PVC / 28% PES, 340g/m<sup>2</sup>.

**CHEMICAL GREEN** 231000-206-K5  
**SIZE** S-3XL







## CLASSIC SOU'WESTER

Stitched ribbon · Waterproof ·  
Outer fabric: 67% PVC / 33% PES, 340g/m<sup>2</sup>

<b>HV-ORANGE</b>	251000-203-H3
<b>ANTRACITE</b>	251000-203-V8
<b>GREEN</b>	251000-203-R5
<b>SIZE</b>	S-2XL



## PROTECTIVE SLEEVES FLEX

Elastic at upper arm · Neoprene cuff · Waterproof ·  
Outer fabric: 67% PVC/33% PES, 360g/m<sup>2</sup>.

<b>DARK GREEN</b>	274000-203-R5
<b>SIZE</b>	Onesize



## APRON FLEX

Logobraces with Fix-Lock® suspenders ·  
Outer fabric: 67% PVC/33% PES, 360g/m<sup>2</sup>.

<b>DARK GREEN</b>	261001-203-R5
<b>SIZE</b>	Onesize







## WAIST WADERS

Elastic waistband · Adjustment in the side with velcro ·  
Waterproof · Outer fabric: PVC/PES 700g/m<sup>2</sup>.

**GREEN** 242000-R5  
**SIZE** 40-47



## WADERS SPORT

Spacious · Pocket inside · Fix-Lock® suspenders ·  
Waterproof · Outer fabric: PVC/PES 700g/m<sup>2</sup>

**GREEN** 241003-R5  
**SIZE** 39-48



## HIP BOOTS WADERS

Outer belt loops · Waterproof ·  
Outer fabric: PVC/PES 700g/m<sup>2</sup>

**GREEN**            243000-R5  
**SIZE**              39-48



## WATERPROOF BAG

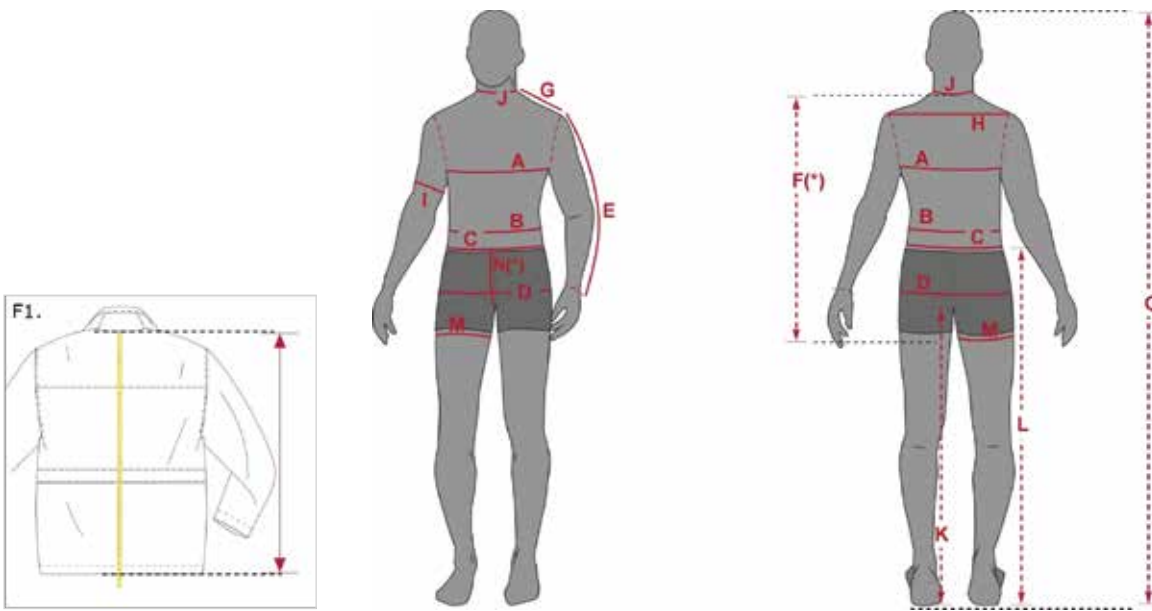
Waterproof zipper and top roll system · Reinforced carry  
handles · Measurements: 41 x 62 x 73 cm · Outer fabric:  
90% PVC / 10% PES, 700g/m<sup>2</sup>.

**BLACK**            991005-213-Z9  
**SIZE**              90L



# SIZE CHART

## Measuring points



- A. CHEST WIDTH: Measure under the arms, across the widest part of chest.  
Measure horizontally around the body.  
With arms along the sides of the body.
- B. WAIST WIDTH (JACKET): Measure around the widest part of waist/ stomach.  
Level usually at navel.  
Keeping the measuring tape horizontal.
- C. WAIST WIDTH (TROUSERS): Measure around the waist at level top of waist band.
- D. HIP WIDTH: Measure around the widest part of the hips.  
Keeping the measuring tape horizontal.
- E. SLEEVE LENGTH: With arm slightly bent, measure from top of shoulder over the elbow down to the wrist bone.
- F (\*). JACKET LENGTH: Measure at center back from neck down to the required jacket length (if waist band on jacket include this in 1/1 length).  
See sketch "F1."
- G. SHOULDER LENGTH: Measure from neck to end of shoulder.
- K. INSIDE LEG LENGTH: Measure from the crotch to the hem. Make sure measuring tape is tight along the inside of leg to hem of trousers.  
Stand straight.
- L. SIDE SEAM LENGTH (TROUSERS): Measure from the top of the trouser's waistband to the hem along the outside of leg.
- O. BODY HEIGHT: Measure from top of head to the floor. No shoes !

# SIZE CHART

(Body measurements)

## Normal figure / normal height ( Normale Grössen ) :

Size	42	44	46	48	50	52	54	56	58	60	62	64		
Chest width	84	88	92	96	100	104	108	112	116	120	124	128		
Waist width (trousers)	76	80	84	88	92	96	100	104	108	112	116	120		
Hip width	88	92	96	100	104	108	112	116	120	124	128	132		
Inside leg length	77	78	79	80	81	82	82	83	83	84	84	85		
Body height	168 -176				176 - 184				184 - 192					

## Slim figure / tall ( Schlanke Grössen ) :

Size		86	90	94	98	102	106	110	114	118	122				
Chest width		86	90	94	98	102	106	110	114	118	122				
Waist width (trousers)		78	82	86	90	94	98	102	106	110	114				
Hip width		90	94	98	102	106	110	114	118	122	126				
Inside leg length		82	83	84	85	86	86	87	87	88	88				
Body height		176 - 184				184 - 192				192 - 200					

## Portly figure / short ( Untersetze Grössen ) :

Size				24	25	26	27	28						
Chest width				96	100	104	108	112						
Waist width (trousers)				92	96	100	104	108						
Hip width				101	105	109	113	117						
Inside leg length				76	77	78	78	79						
Body height		160 -168				168 - 176								

## Size conversion

### JACKETS, BOILERSUITS, COMBITROUSERS

DE sizes - Normale	42	44	46	48	50	52	54	56	58	60	62	64	66	68
* DE sizes - Schlanke		86	90	94	98	102	106	110	114	118	122			
* DE sizes - Untersetze		22	23	24	25	26	27	28	29	30	31			
CH size	42	44	46	48	50	52	54	56	58	60	62	64	66	68
SE sizes - Normale		C 44	C 46	C 48	C 50	C 52	C 54	C 56	C 58	C 60	C 62	C 64		
**SE sizes - Slim/tall		B144	B146	B148	B150	B152	B154	B156	B158	B160	B162	B164		
**SE sizes - Portly/short		D88	D92	D96	D100	D104	D108	D112	D116	D120	D124	D128		
UK size		31.5"	33"	34.5"	36"	38"	39.5"	41"	42.5"	44"	45.5"	47"		
ES size		46	48	50	52	54	56	58	60	62	64	66		
FR size		40	42	44	46	48	50	52	54	56	58	60		
US		XS	S	M	L	XL	2XL	3XL						

\* Schlanke / Untersetze = +/- 3 cm in back and sleeve length. Waist width - 2cm / + 4 cm. Body height +/- 8 cm

\*\* Slim,tall / Portly, short = +/- 3 cm in back and sleeve length. Waist width - 2cm / + 4 cm. Body height +/- 8 cm

## Size conversion

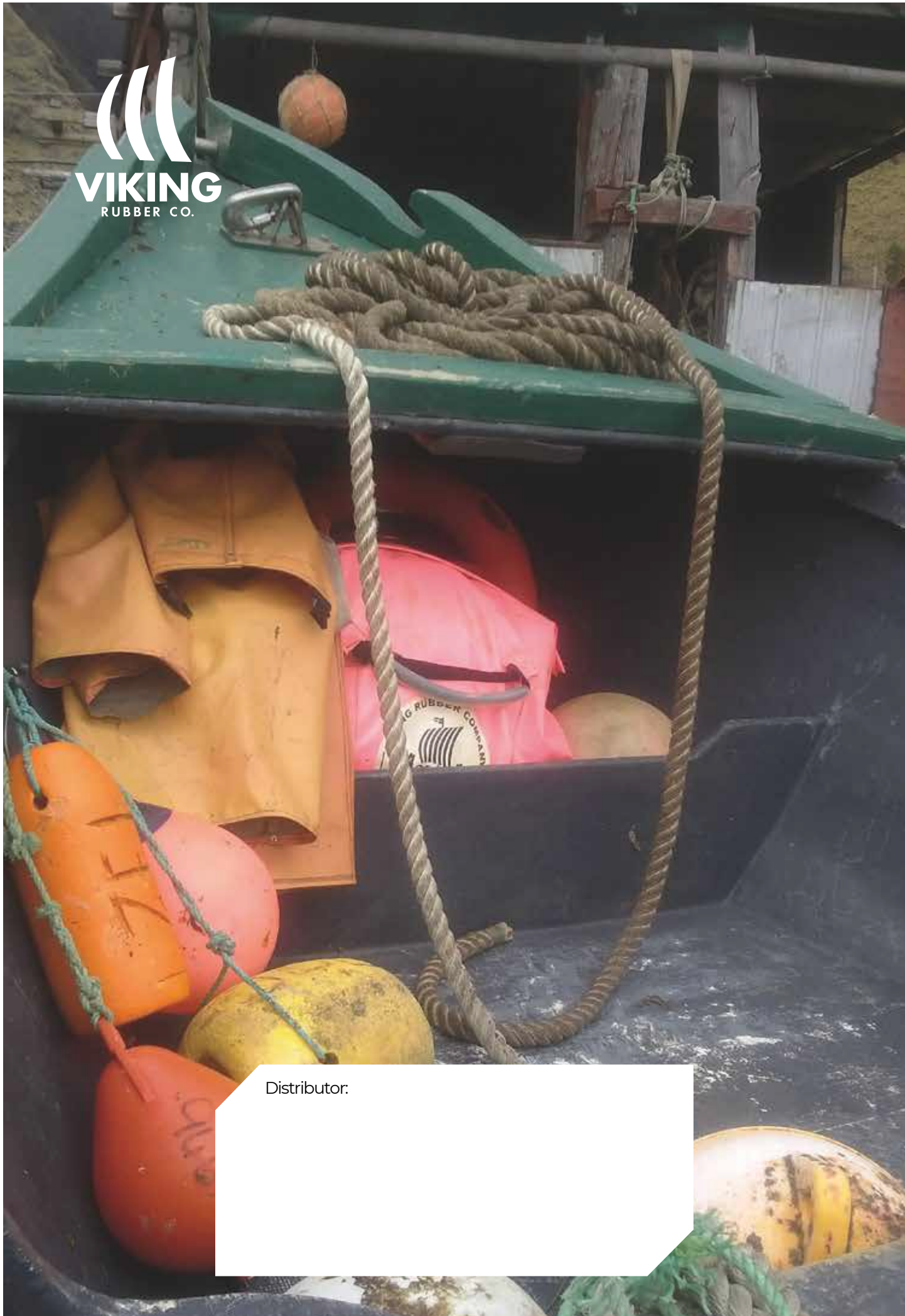
### TROUSERS, BIBTROUSERS

DE sizes - Normale	42	44	46	48	50	52	54	56	58	60	62	64	66	68
* DE sizes - Schlanke		86	90	94	98	102	106	110	114	118	122			
* DE sizes - Untersetze		22	23	24	25	26	27	28	29	30	31			
CH size	42	44	46	48	50	52	54	56	58	60	62	64	66	68
SE sizes - Normale		C 44	C 46	C 48	C 50	C 52	C 54	C 56	C 58	C 60	C 62	C 64		
**SE sizes - Slim/tall		B144	B146	B148	B150	B152	B154	B156	B158	B160	B162	B164		
**SE sizes - Portly/short		D88	D92	D96	D100	D104	D108	D112	D116	D120	D124	D128		
UK size		31.5"	33"	34.5"	36"	38"	39.5"	41"	42.5"	44"	45.5"	47"		
ES size		38	40	42	44	46	48	50	52	54	56	58		
FR size		40	42	44	46	48	50	52	54	56	58	60		
US		XS	S	M	L	XL	2XL	3XL						

\* Schlanke / Untersetze = +/- 4 cm inside leg length. Waist width - 2 cm / + 4 cm. Body height +/- 8 cm.

\*\* Slim,tall / Portly, short = +/- 4 cm inside leg length. Waist width - 2 cm / + 4 cm. Body height +/- 8 cm.





Distributor: